



Fitting Instructions for RAD0194 Radiator Guard
DUCATI MULTISTRADA 1200 '15-



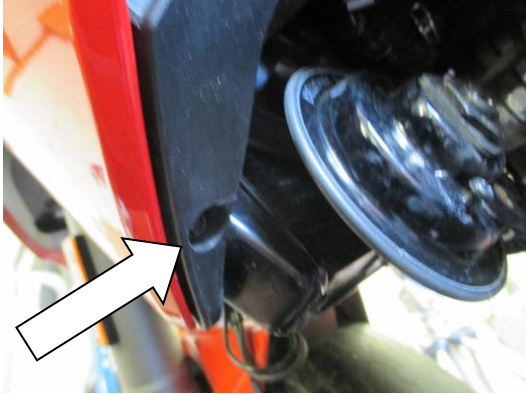
In This Kit There Should Be
1x Radiator Guard (RAD0194)
2x 100mm Lengths of self-adhesive Foam



Picture 1



Picture 2



Picture 3



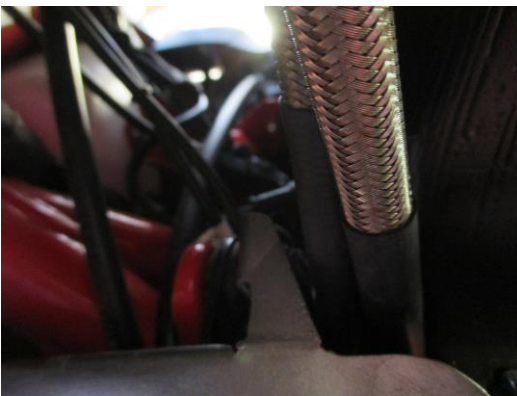
Picture 4



Picture 5



Picture 6



Picture 7



Picture 8



Picture 9



Picture 10

GENERAL TORQUE SETTINGS

- M4 BOLT = 8Nm
- M5 BOLT = 12Nm
- M6 BOLT = 15Nm
- M8 BOLT = 20Nm
- M10 BOLT = 40Nm
- M12 NYLOC NUT = 40Nm

TOOLS REQUIRED

- Socket set to include 8mm socket & wrench.
- 4mm Allen key or socket bits with extension.

FITTING INSTRUCTIONS

- To fit the radiator guard to the bike cut the foam strip provided into 10mm wide pieces and stick them to the back of the radiator guard frame, so that they sit between the radiator guard and the radiator.
- Remove the bodywork on each side of the bike, as arrowed in picture 1. To do this, remove the two bolts on the back of the bodywork, as arrowed in pictures 2 & 3, and then slide the red section of bodywork forward to remove it from its mounts, as shown in picture 4.
- Remove the bolts that mount the top of the radiator to the frame on both sides of the bike. These bolts can be accessed from the side where the side bodywork used to be, as shown in picture 5.
- Offer the R&G radiator into place, ensuring the lower mount locates on the inside of the lower radiator mount and is fitted against the rubber mount, as shown in picture 6.
- Ensure the two upper mounts sit on the outside of the radiator on both sides of the bike, before re-fitting the original bolt through the radiator guard mount and then through the radiator mount and tighten into the threaded boss on the frame, as shown in pictures 7, 8 & 9.
- Ensure the radiator guard is correctly mounted before tightening the two mounting bolts. *The hole on the lower mount along with the mounting hole that is bent underneath the radiator is only to be used if fitting the Cylinder Head Guard (CHG0003) with the radiator guard.*
- Re-fit the bodywork on both sides of the bike along with the two bolts.

ISSUE 1 21/07/2015 (AR)

R&G Racing

Unit 1, Shelley's Lane, East Worldham, Alton, Hampshire, GU34 3AQ

Tel: +44 (0)1420 89007 Fax: +44 (0)1420 87301 www.rg-racing.com Email: info@rg-racing.com



FITTING INSTRUCTIONS FOR RAD0194BK RADIATOR GUARD
DUCATI MULTISTRADA ENDURO 2016-

In This Kit There Should Be

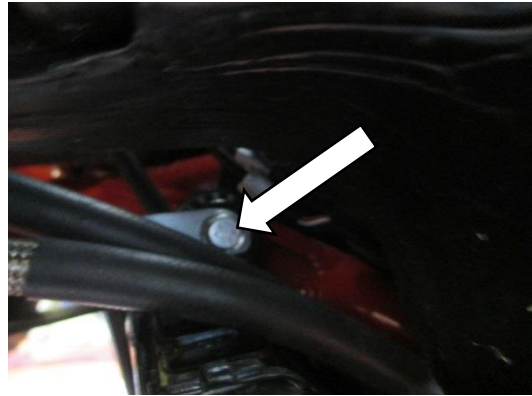
- 1 x Radiator Guard (RAD0194BK)
- 2 x 100mm Lengths of Self-Adhesive Foam

Tools Required

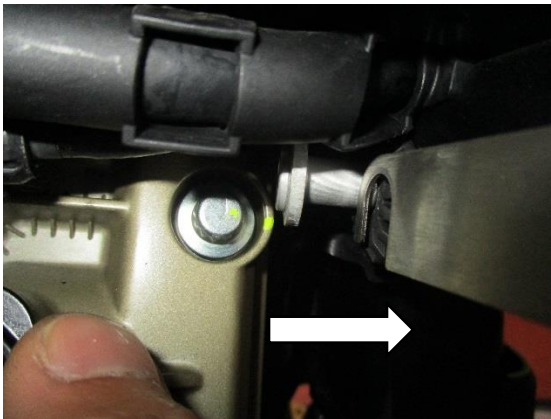
- 8mm spanner



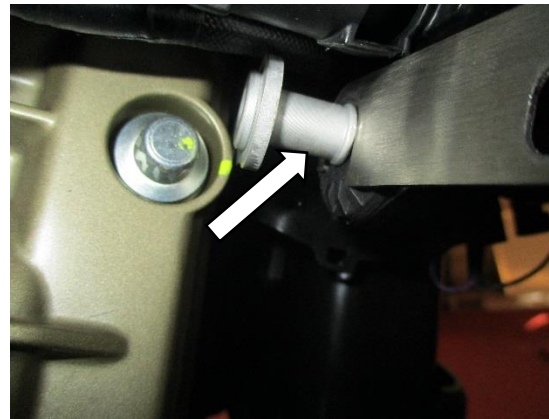
Picture 1



Picture 2



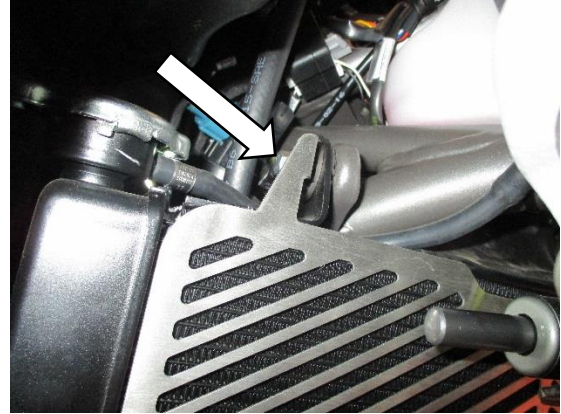
Picture 3



Picture 4



Picture 5



Picture 6

FITTING INSTRUCTIONS

- Starting from the LHS (as you sit on the bike), remove the top left hand bolt securing the radiator using an 8mm spanner (Arrowed in picture 1). Bolt to be re-used at later stage.
- Remove the top right hand bolt securing the radiator using an 8mm spanner (Arrowed in picture 2). Bolt to be re-used at later stage.
- Slide the rubber grommet located on the bottom mount of the radiator in the direction shown in picture 3. Ensure it would give enough room for the radiator guard to be hooked on to.
- From the kit, cut the foam strip provided into 10mm wide pieces and stick them to the back of the radiator guard frame, so that they sit between the radiator guard and the radiator.
- Offer the R&G bottom radiator guard hook over the exposed shaft arrowed in picture 4. Slide the rubber grommet back in so then the bottom radiator guard is sandwiched between the rubber grommet and the radiator bottom bracket.
- Align the radiator guard two top mounting points as original and secure with OEM bolts removed earlier (shown in picture 5 & 6). Ensure that the two upper mounts sit on the outside of the radiator on both sides of the bike.
- Ensure the radiator guard is correctly mounted before tightening the two mounting bolts. *The hole on the lower mount along with the mounting hole that is bent underneath the radiator is only to be used if fitting the Cylinder Head Guard (CHG0003) with the radiator guard.*

Issue 2 13/06/2016 (HH)



Digital copies of these instructions are available to download from www.rg-racing.com

CONSUMER NOTICE

The catalogue description and any exhibition of samples are only broad indications of the Products and R&G may make design changes which do not diminish their performance or visual appeal and supplying them in such state shall conform to the order. The Buyer acknowledges no representation or warranty (other than as to title) has been given or will apply to the Products other than those in R&G's order or confirmation and the Buyer confirms it has chosen the Products as being of merchantable quality and suitable for its particular purposes. Where R&G fits the Products or undertakes other services it shall exercise reasonable skill and care and rectify any fault free of charge unless the workmanship has been disturbed. The Buyer is responsible for ensuring that the warranty on the motorcycle is not affected by the fitting of the Products. On return of any defective Products R&G shall at its option either supply a replacement or refund the purchase money but shall not be liable if the Products have been modified or used or maintained otherwise than in accordance with R&G's or manufacturer's instructions and good engineering practice or if the defect arises from accident or neglect. Other than identified above and subject to R&G not limiting its liability for causing death and personal injury, it shall not be liable for indirect or consequential loss and otherwise its liability shall be limited to the amounts paid by the Buyer for the Products or the fitting or service concerned. These terms do not affect the Buyer's statutory rights.

R&G RACING RETURNS POLICY (NON-FAULTY GOODS)

Returns must be pre-authorized (if not pre-authorized the return will be rejected). Goods may only be returned direct to us if they were purchased direct from us (customer must prove if necessary). Otherwise to be returned to original vendor. Goods must be in re-sellable condition, in the opinion of R&G Racing. All returns are subject to a 25% restocking and handling fee (25% of the gross value exc. P&P – at the prevailing price at time of purchase). The customer must pay any and all carriage charges. No returns of discontinued products, unless within 14 days of purchase. This policy does not affect your statutory rights and does not refer to faulty goods.



Instructions de montage pour RAD0194 Protection radiateur
DUCATI MULTISTRADA 1200 '15-



Le kit doit contenir :
1x Protection radiateur (RAD0194)
2x 100mm Longueurs de mousse autocollante



Photo 1



Photo 2

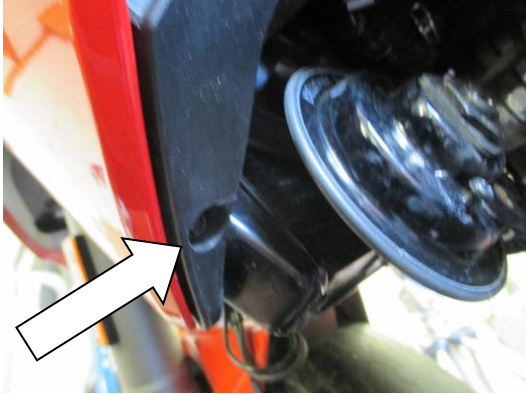


Photo 3



Photo 4



Photo 5



Photo 6

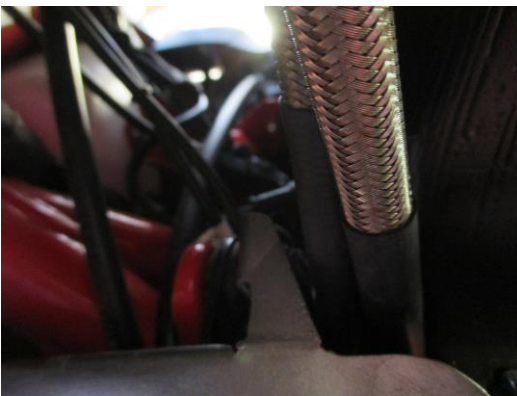


Photo 7



Photo 8



Photo 9



Photo 10

COUPLES DE SERRAGE RECOMMANDÉS

- M4 BOULON = 8Nm
- M5 BOULON = 12Nm
- M6 BOULON = 15Nm
- M8 BOULON = 20Nm
- M10 BOULON = 40Nm
- M12 NYLOC NUT = 40Nm

Outils requis

- Jeu de clés à douille 8mm.
- Clé Allen 4mm avec extension.

INSTRUCTIONS DE MONTAGE :

- Couper la mousse en bandeaux de 10mm puis collez ces bandeaux au bas du support de protection radiateur, de façon à ce que ces bandeaux se situent entre la protection radiateur et le radiateur.
- Enlever le carénage de chaque coté de la moto, photo 1. Pour cela, enlever les 2 boulons au bas du carénage, voir photos 2 & 3, puis glisser la portion rouge du carénage vers l'avant pour l'enlever de ses supports, photo 4.
- Enlever les boulons qui fixent le haut du radiateur au cadre des 2 cotés de la moto. Vous pouvez accéder à ces boulons du coté où le carénage latéral se trouve habituellement, photo 5.
- Mettre la protection R&G en place, en veillant à ce que la fixation inférieure se place dans le support radiateur inférieur et soit positionné contre le support en caoutchouc, photo 6.
- Veiller à ce que les 2 supports supérieurs se placent à l'extérieur du radiateur des 2 cotés de la moto, avant de re-passer le boulon d'origine dans le support de protection radiateur puis dans le support radiateur et enfin, serrer dans le patron fileté du cadre, photos 7, 8 & 9.
- Veiller à ce que la protection radiateur soit correctement montée avant de serrer les 2 boulons de fixation. *Le trou sur le support inférieur avec le trou de montage qui est courbé sous le radiateur est utile uniquement si vous montez une protection tête de cylindre (CHG0003) avec la protection radiateur.*
- Remettre le carénage des 2 cotés de la moto, avec les 2 boulons.

R&G Racing

Unit 1, Shelley's Lane, East Worldham, Alton, Hampshire, GU34 3AQ

Tel: +44 (0)1420 89007 Fax: +44 (0)1420 87301 www.rg-racing.com Email: info@rg-racing.com



INSTRUCTIONS DE MONTAGE POUR RAD0194BK
Grille de protection radiateur
DUCATI MULTISTRADA ENDURO 2016-

Le kit doit contenir :

- 1x Grille de protection radiateur (RAD0194BK)
- 2 x 100mm Longueurs de mousse autocollante

Outils requis

- Clé à molette de 8mm



Photo 1

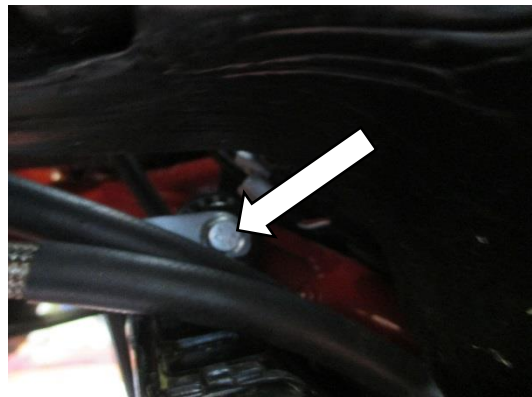


Photo 2

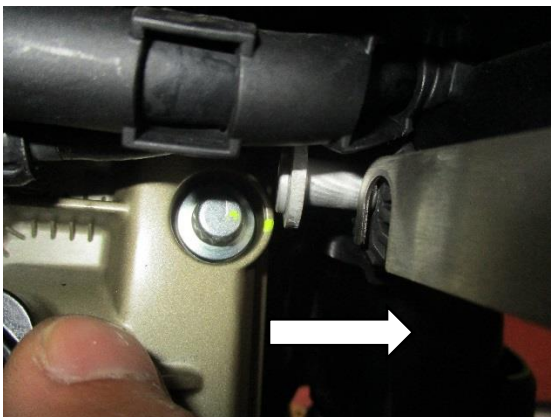


Photo 3

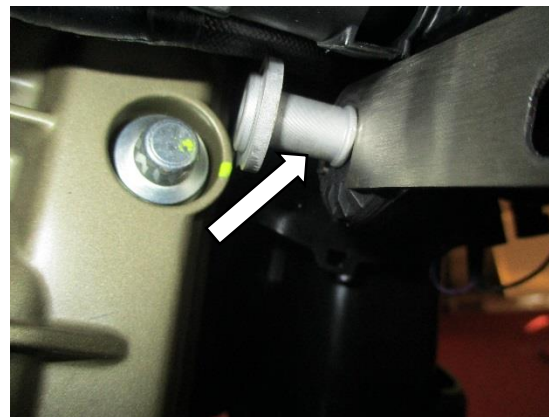


Photo 4



Photo 5

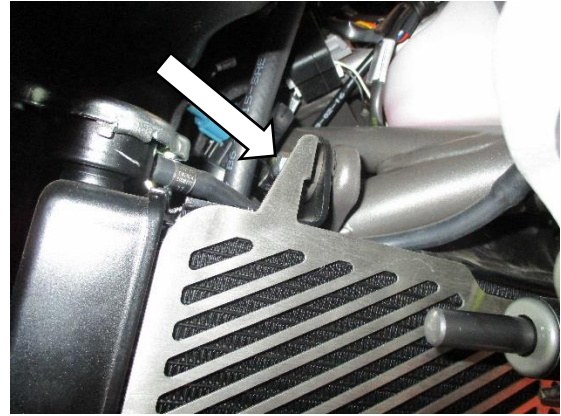


Photo 6

Instructions de montage :

- En partant du coté gauche (lorsqu'on est assis sur la moto), enlever le boulon du coté gauche qui fixe le radiateur à l'aide d'une clé à molette de 8mm, voir photo 1. Le boulon sera réutilisé par la suite.
- Enlever le boulon de fixation supérieur droit qui fixe le radiateur à l'aide d'une clé à molette de 8mm, voir photo 2. Le boulon sera réutilisé par la suite.
- Faites glisser le joint en caoutchouc placé au bas du support du radiateur dans la direction indiquée par la photo 3. Veiller à laisser de l'espace pour venir accrocher la grille de protection radiateur par la suite.
- Couper la mousse autocollante en bandeaux de 10mm de large et collez-les au bas du cadre de support protection radiateur, de façon à ce qu'ils se retrouvent entre la grille de protection et le radiateur.
- Monter la grille de protection R&G sur l'arbre exposé sur la photo 4. Glisser l'œillet en caoutchouc dedans de façon à ce que le bas de la grille de protection radiateur soit pris en sandwich entre l'œillet en caoutchouc et le support inférieur de radiateur.
- Aligner la grille de protection radiateur avec les 2 points de fixation supérieurs comme à l'origine puis fixer à l'aide des boulons d'origine enlevés plus tôt, voir photos 5 & 6. Veiller à ce que les 2 supports supérieurs se placent à l'extérieur du radiateur, des 2 cotés de la moto.
- Veiller à ce que la grille de protection soit correctement montée avant de serrer les 2 boulons de fixation. Le trou du support inférieur avec le trou de fixation courbé *au*



dessous doit uniquement être utilisé si vous montez la grille de protection du maître cylindre (CHG0003) avec la grille de protection radiateur.

Notice disponible au téléchargement sur www.rg-racing.com

Issue 2 13/06/2016 (HH)

CONSUMER NOTICE

The catalogue description and any exhibition of samples are only broad indications of the Products and R&G may make design changes which do not diminish their performance or visual appeal and supplying them in such state shall conform to the order. The Buyer acknowledges no representation or warranty (other than as to title) has been given or will apply to the Products other than those in R&G's order or confirmation and the Buyer confirms it has chosen the Products as being of merchantable quality and suitable for its particular purposes. Where R&G fits the Products or undertakes other services it shall exercise reasonable skill and care and rectify any fault free of charge unless the workmanship has been disturbed. The Buyer is responsible for ensuring that the warranty on the motorcycle is not affected by the fitting of the Products. On return of any defective Products R&G shall at its option either supply a replacement or refund the purchase money but shall not be liable if the Products have been modified or used or maintained otherwise than in accordance with R&G's or manufacturer's instructions and good engineering practice or if the defect arises from accident or neglect. Other than identified above and subject to R&G not limiting its liability for causing death and personal injury, it shall not be liable for indirect or consequential loss and otherwise its liability shall be limited to the amounts paid by the Buyer for the Products or the fitting or service concerned. These terms do not affect the Buyer's statutory rights.

R&G RACING RETURNS POLICY (NON-FAULTY GOODS)

Returns must be pre-authorized (if not pre-authorized the return will be rejected). Goods may only be returned direct to us if they were purchased direct from us (customer must prove if necessary). Otherwise to be returned to original vendor. Goods must be in re-sellable condition, in the opinion of R&G Racing. All returns are subject to a 25% restocking and handling fee (25% of the gross value exc. P&P – at the prevailing price at time of purchase). The customer must pay any and all carriage charges. No returns of discontinued products, unless within 14 days of purchase. This policy does not affect your statutory rights and does not refer to faulty goods.

R&G Racing
Unit 1, Shelley's Lane, East Worldham, Alton, Hampshire, GU34 3AQ
Tel: +44 (0)1420 89007 Fax: +44 (0)1420 87301 www.rg-racing.com Email: info@rg-racing.com